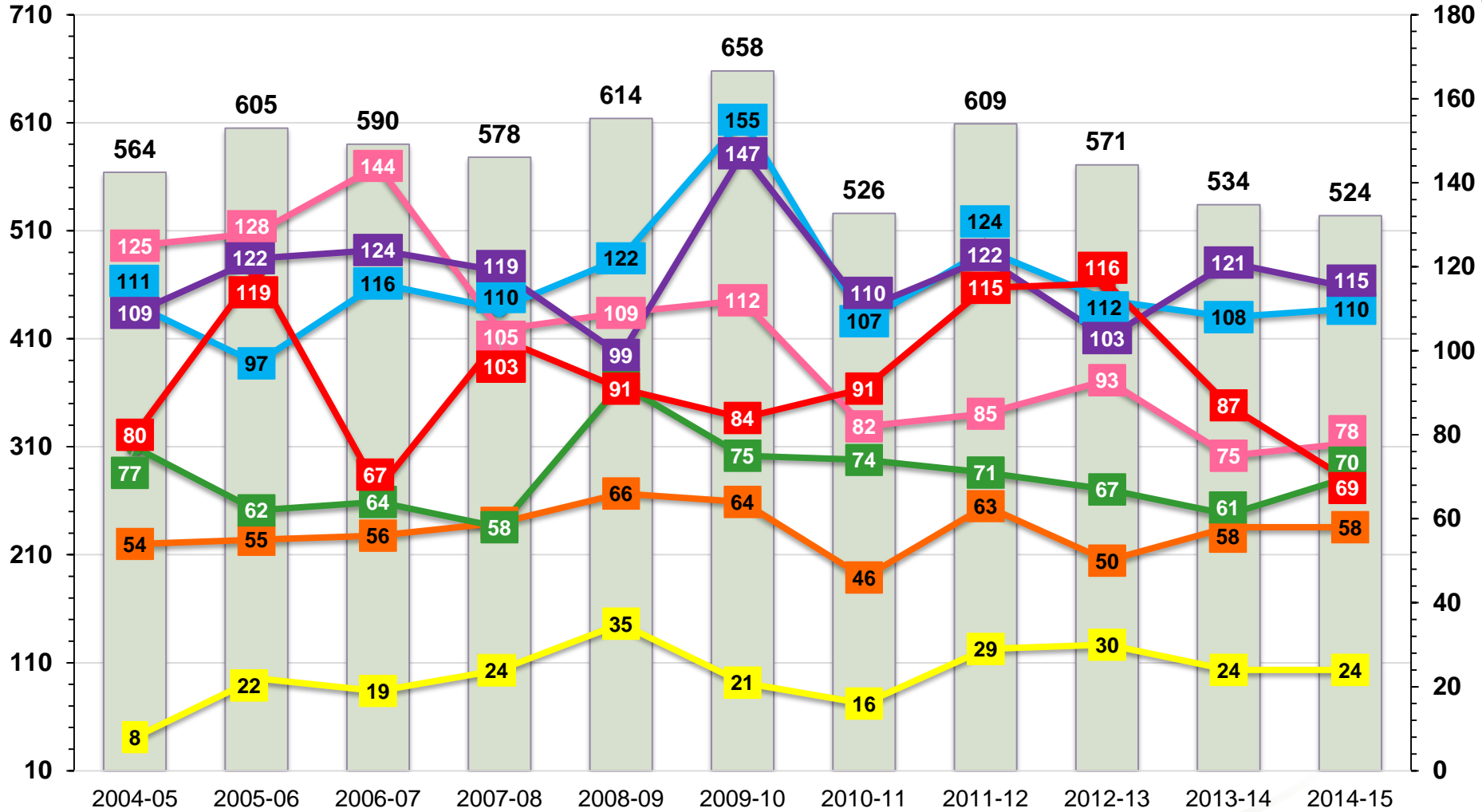




# Assessment of Graduation Rates for the College of Engineering 2005-2015



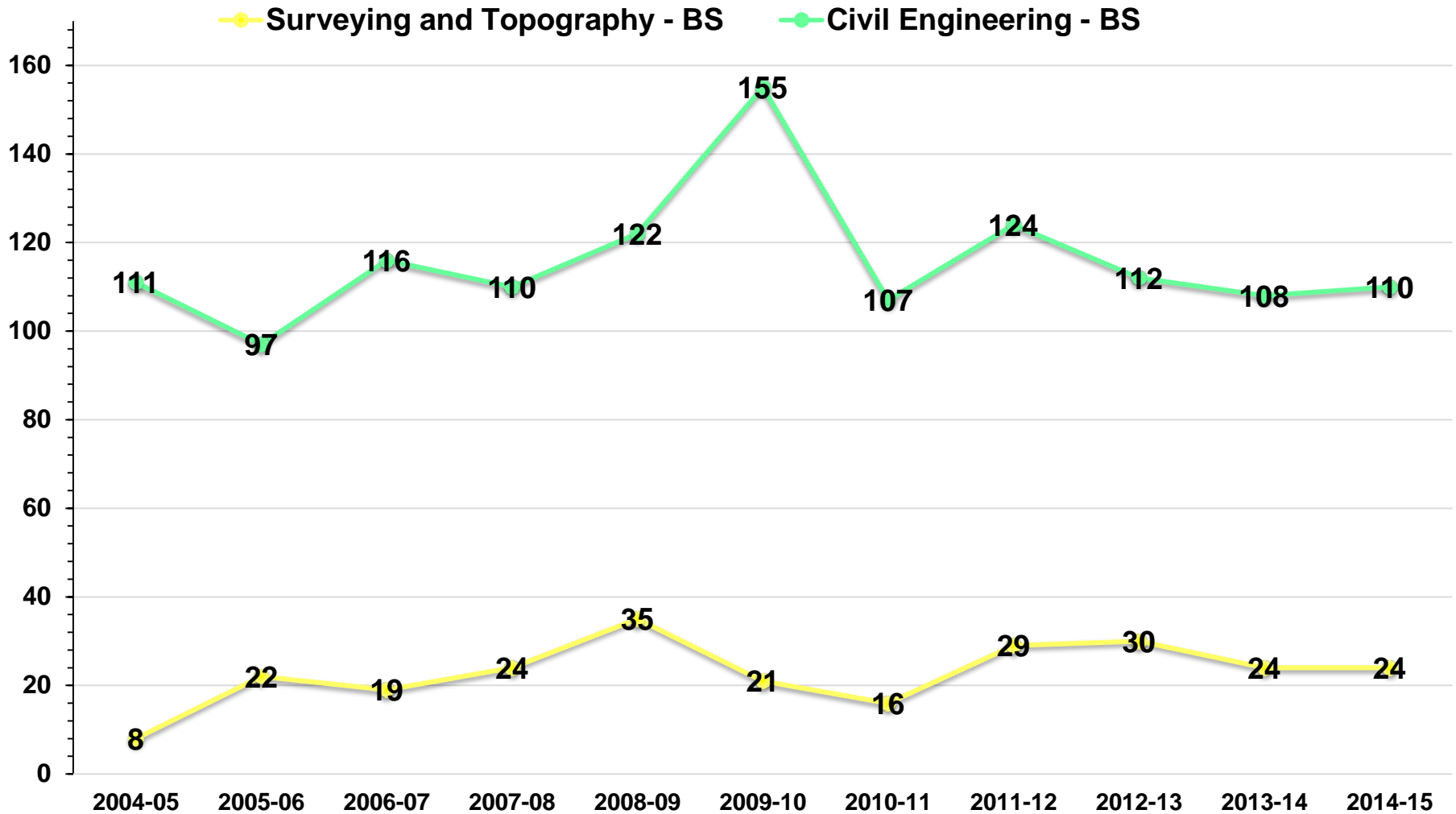
# College of Engineering Bachelor of Science Graduates 2005-2015



- Total
- Surveying and Topography - BS
- Civil Engineering - BS
- Computer Engineering - BS
- Electrical Engineering - BS
- Mechanical Engineering - BS
- Chemical Engineering - BS
- Industrial Engineering - BS

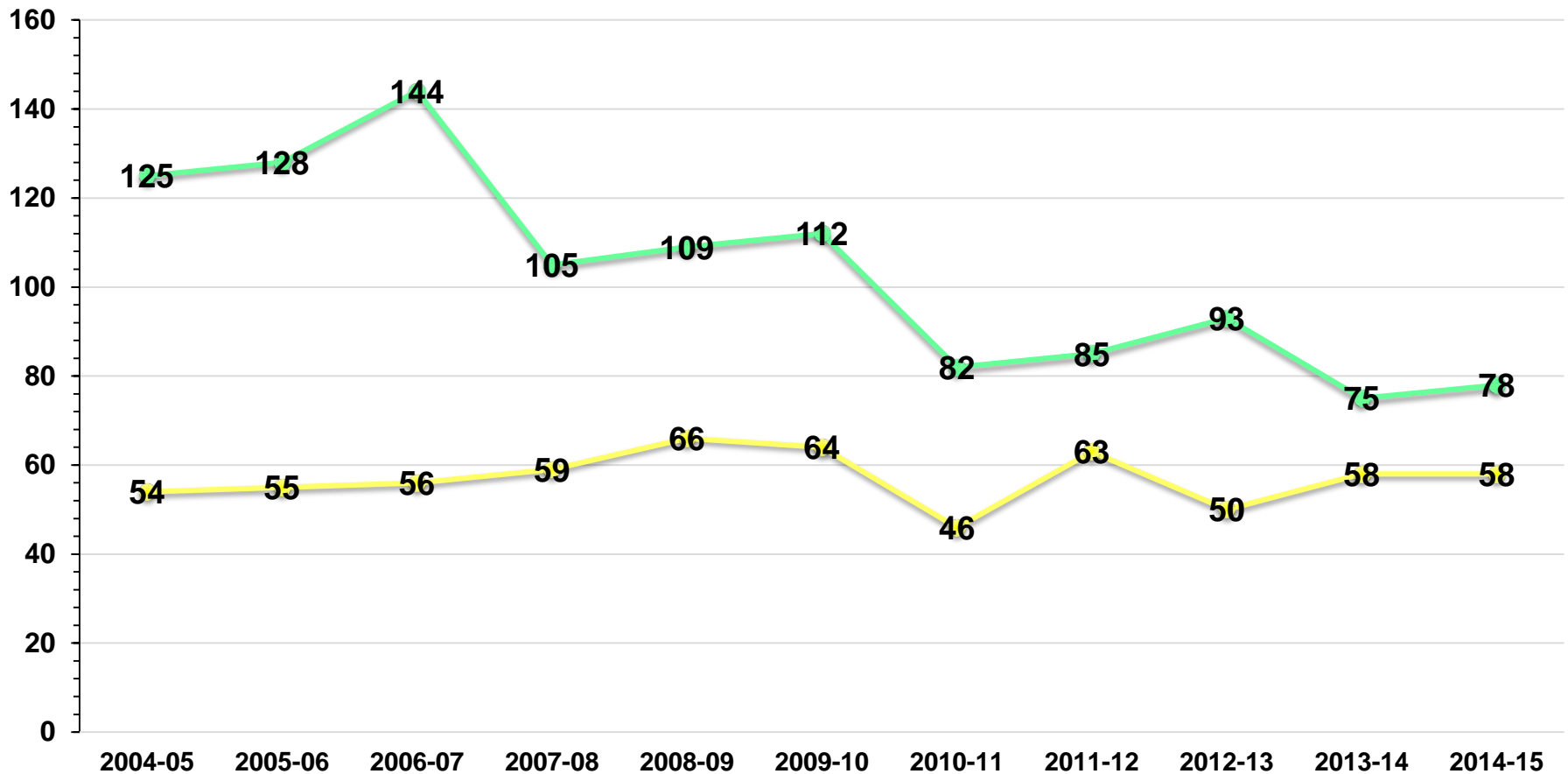


## Bachelor of Science Graduates 2005-2015



## Bachelor of Science Graduates 2005-2015

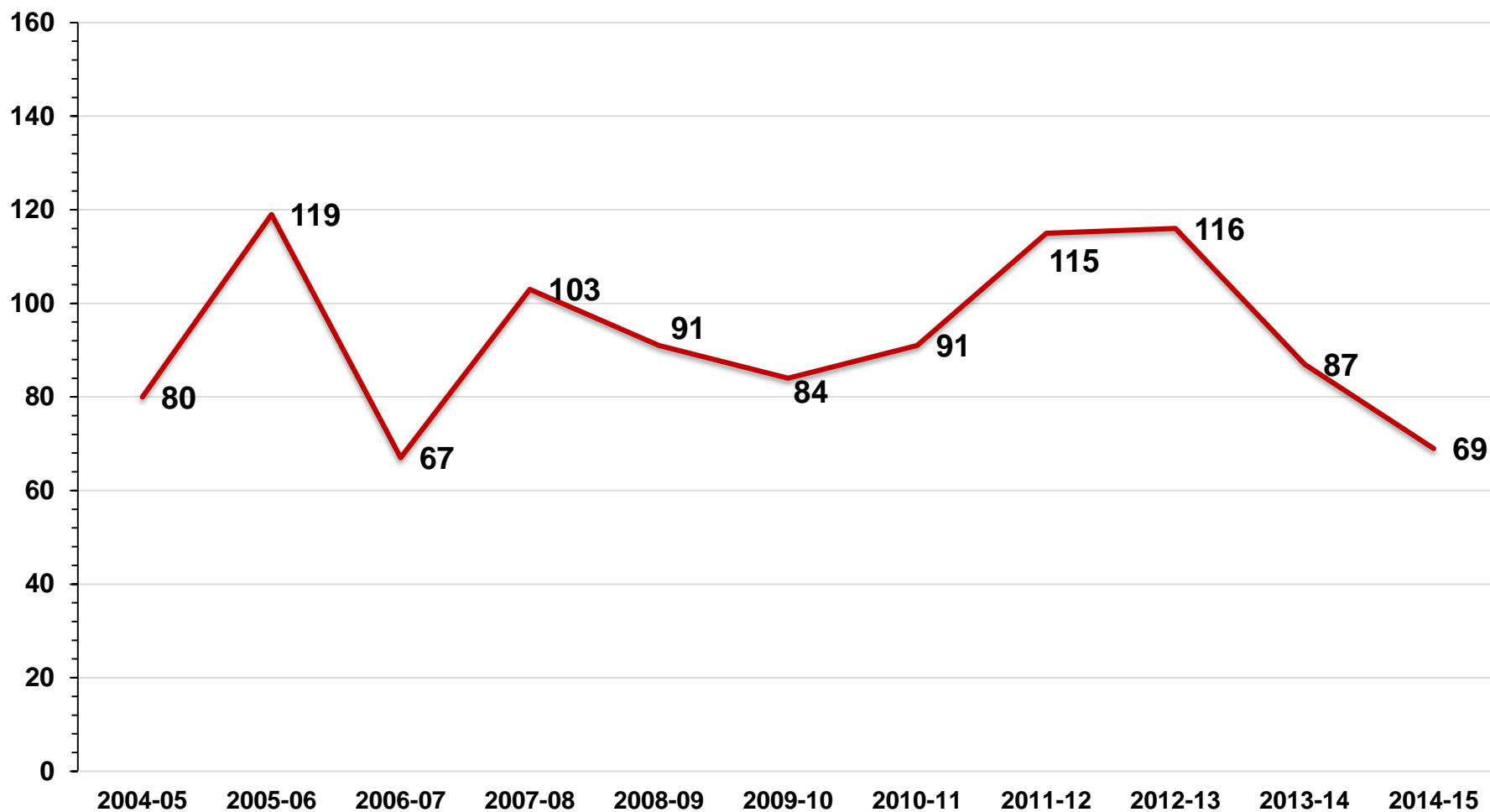
● Computer Engineering - BS    
 ● Electrical Engineering - BS





## Bachelor of Science Graduates 2005-2015

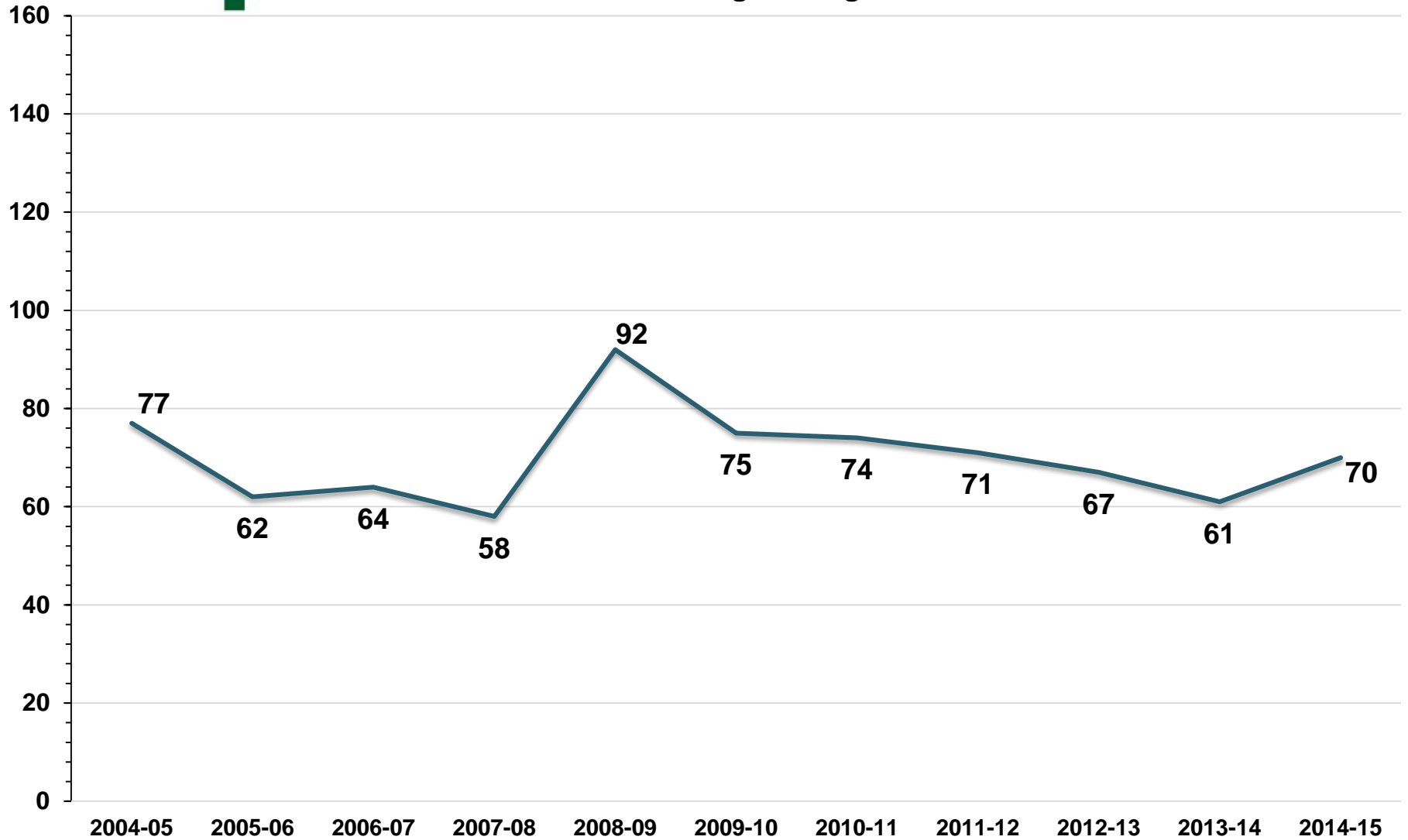
— Chemical Engineering - BS





# Bachelor of Science Graduates 2005-2015

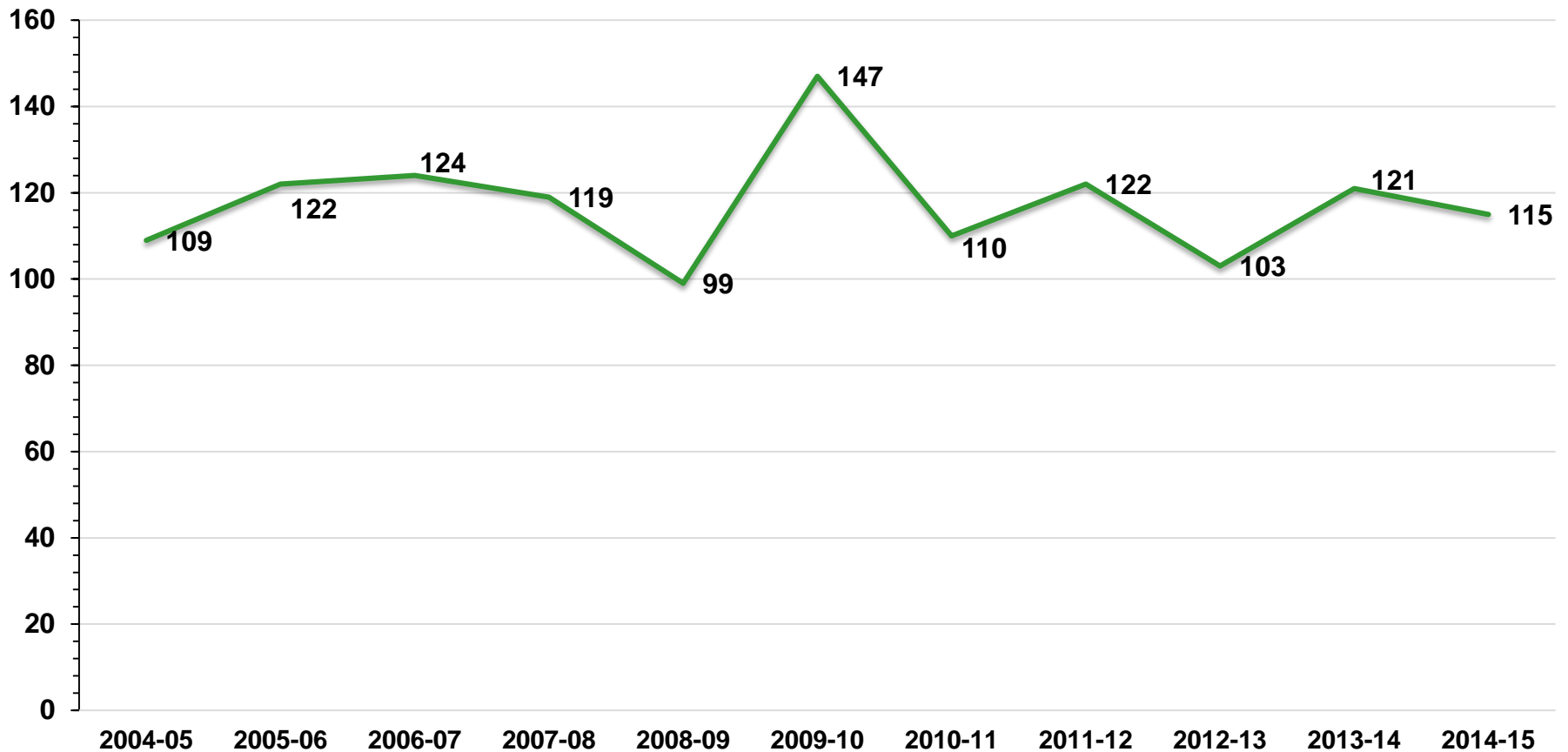
— Industrial Engineering - BS



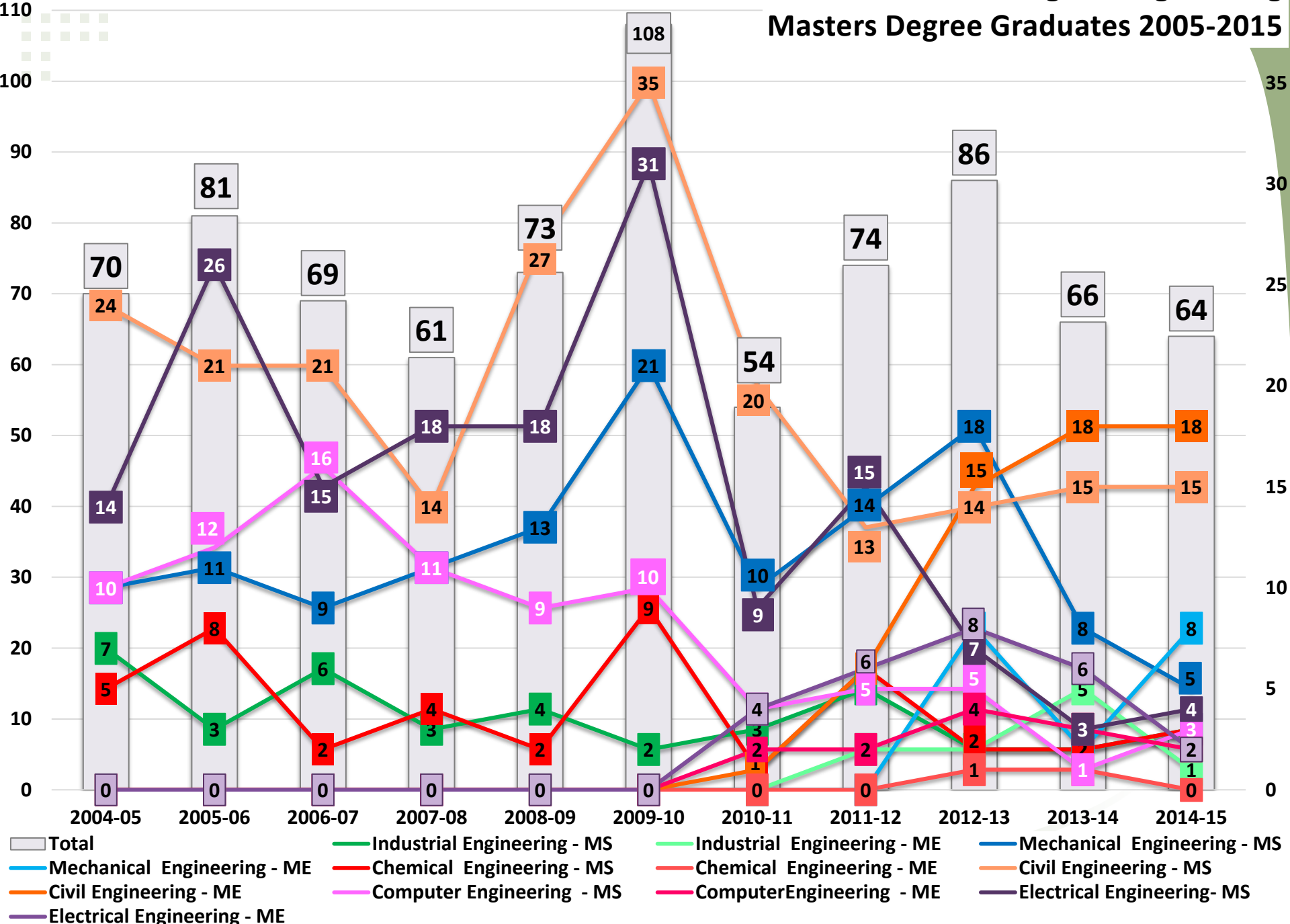
# MECHANICAL ENGINEERING

## Bachelor of Science Graduates 2005-2015

— Mechanical Engineering - BS

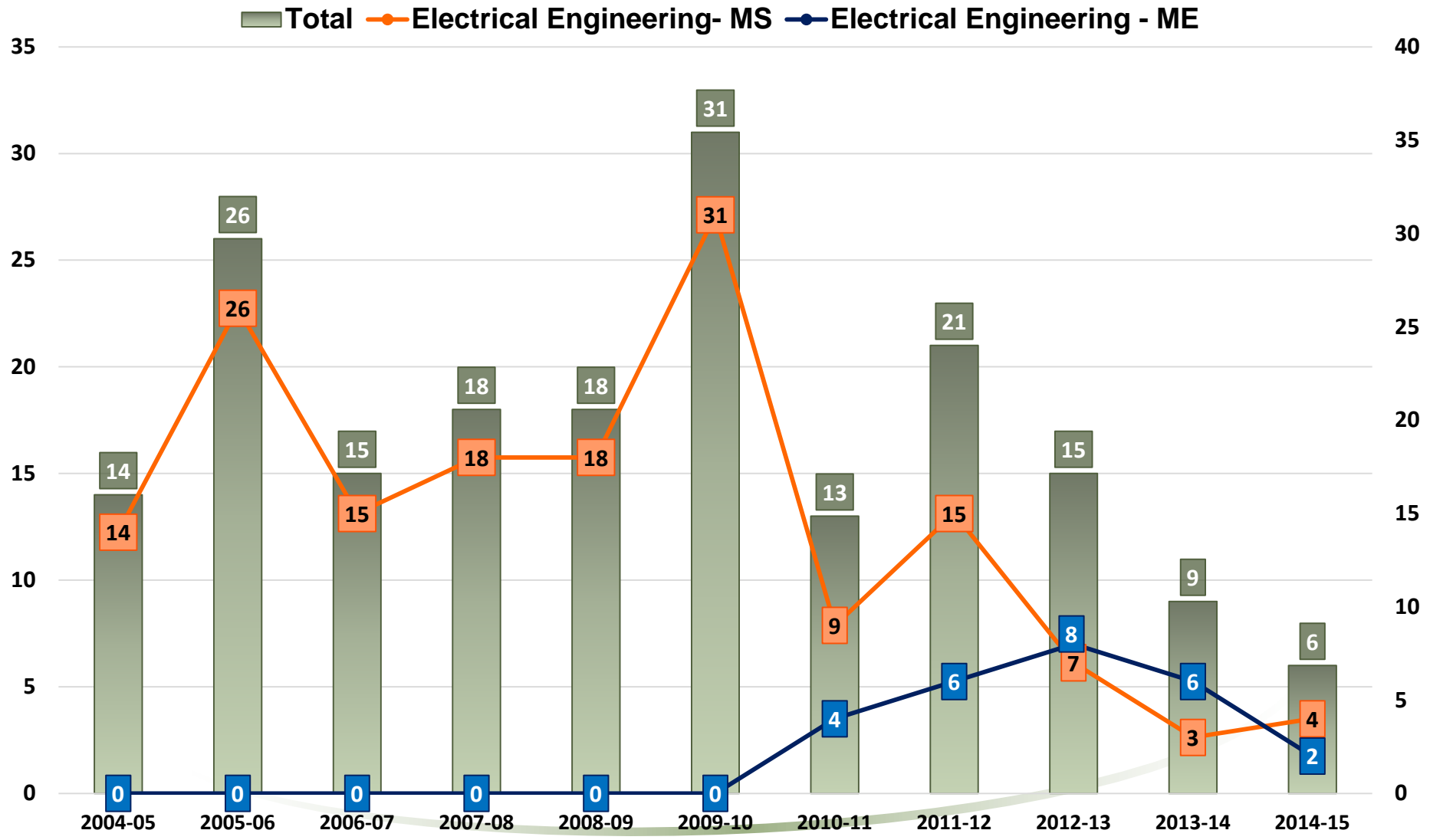


# College of Engineering Masters Degree Graduates 2005-2015

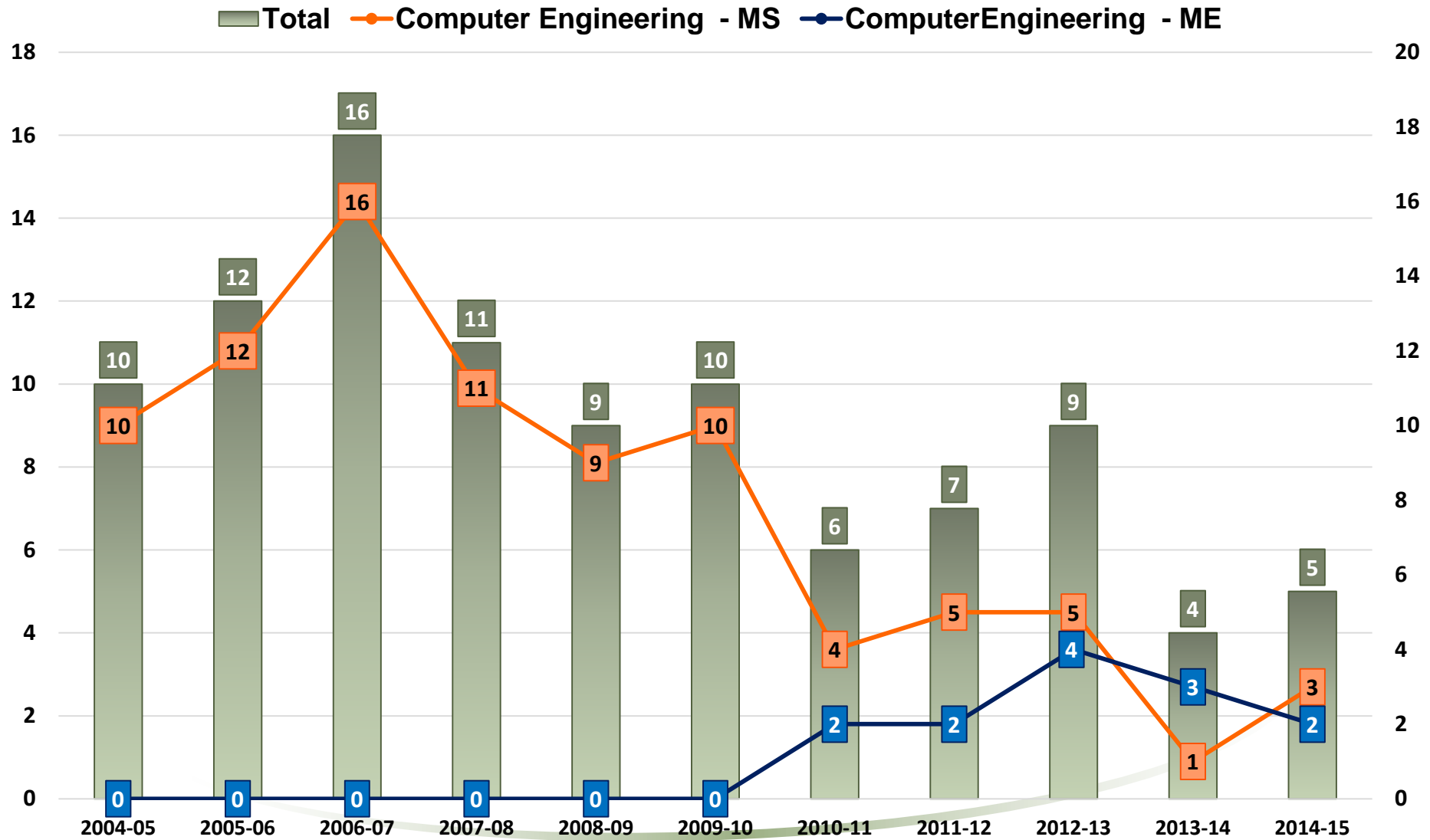




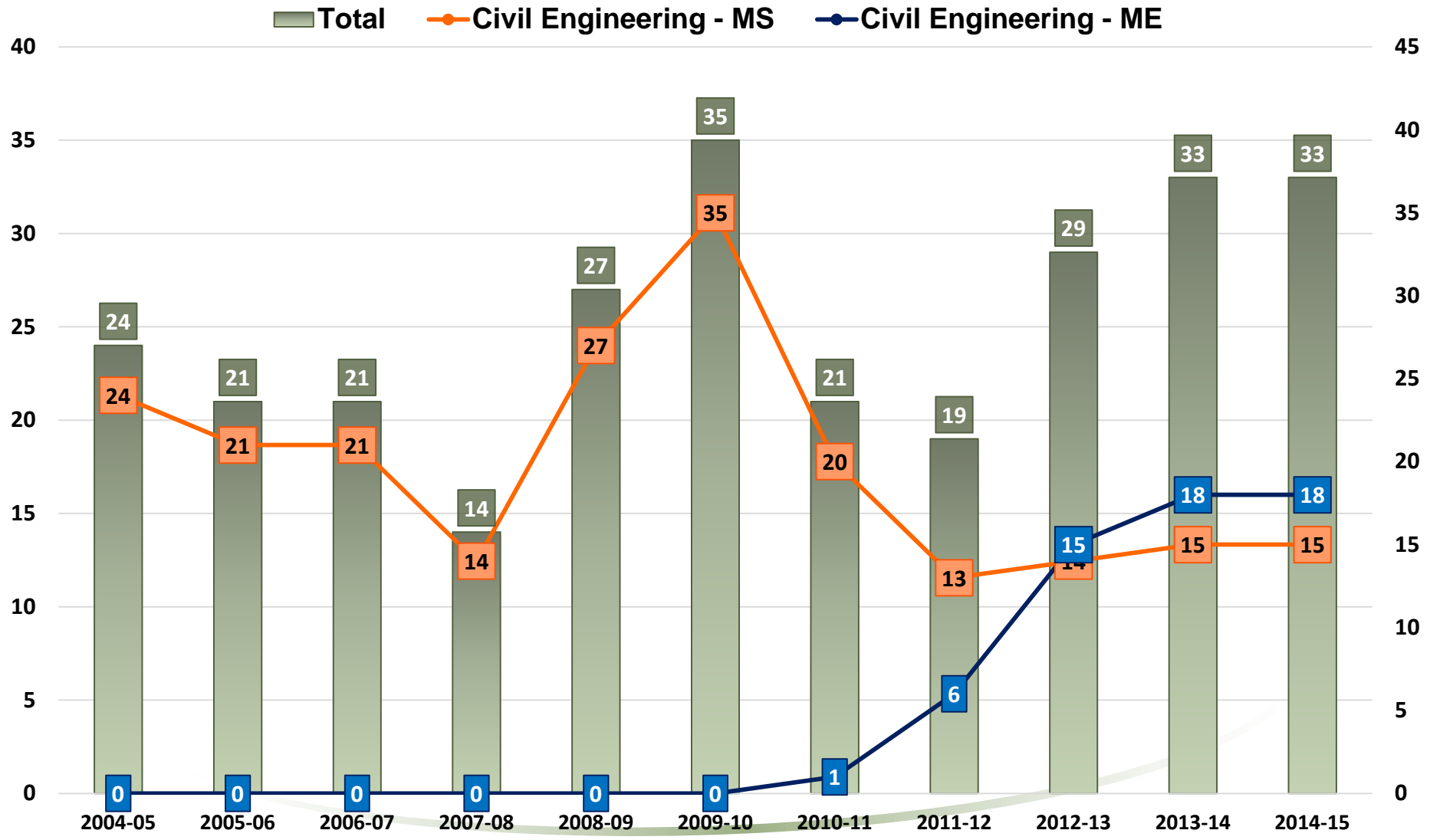
# College of Engineering Masters Degrees in Science and Engineering Graduates 2005-2015



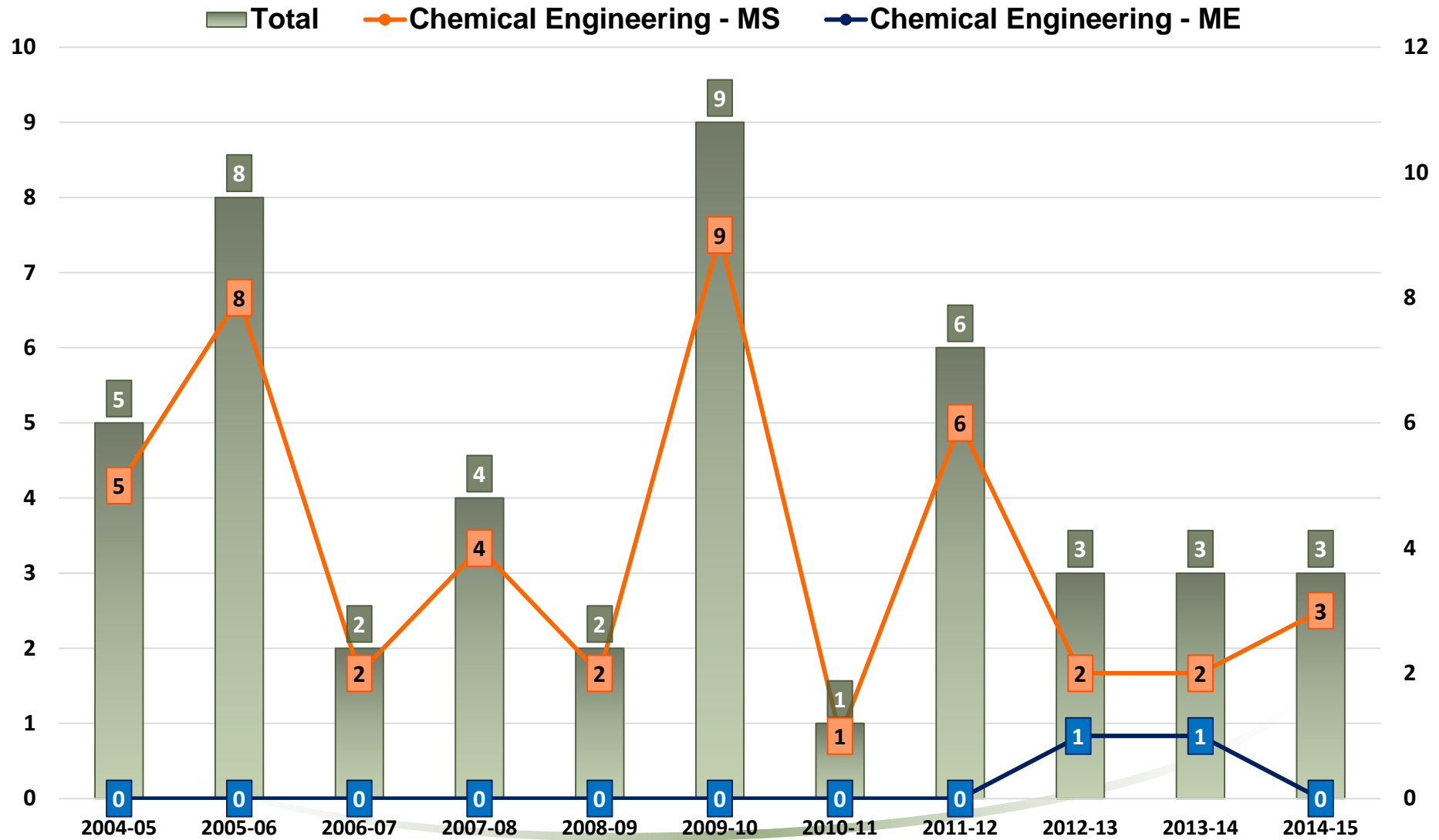
# College of Engineering Masters Degrees in Science and Engineering Graduates 2005-2015



# College of Engineering Masters Degrees in Science and Engineering Graduates 2005-2015

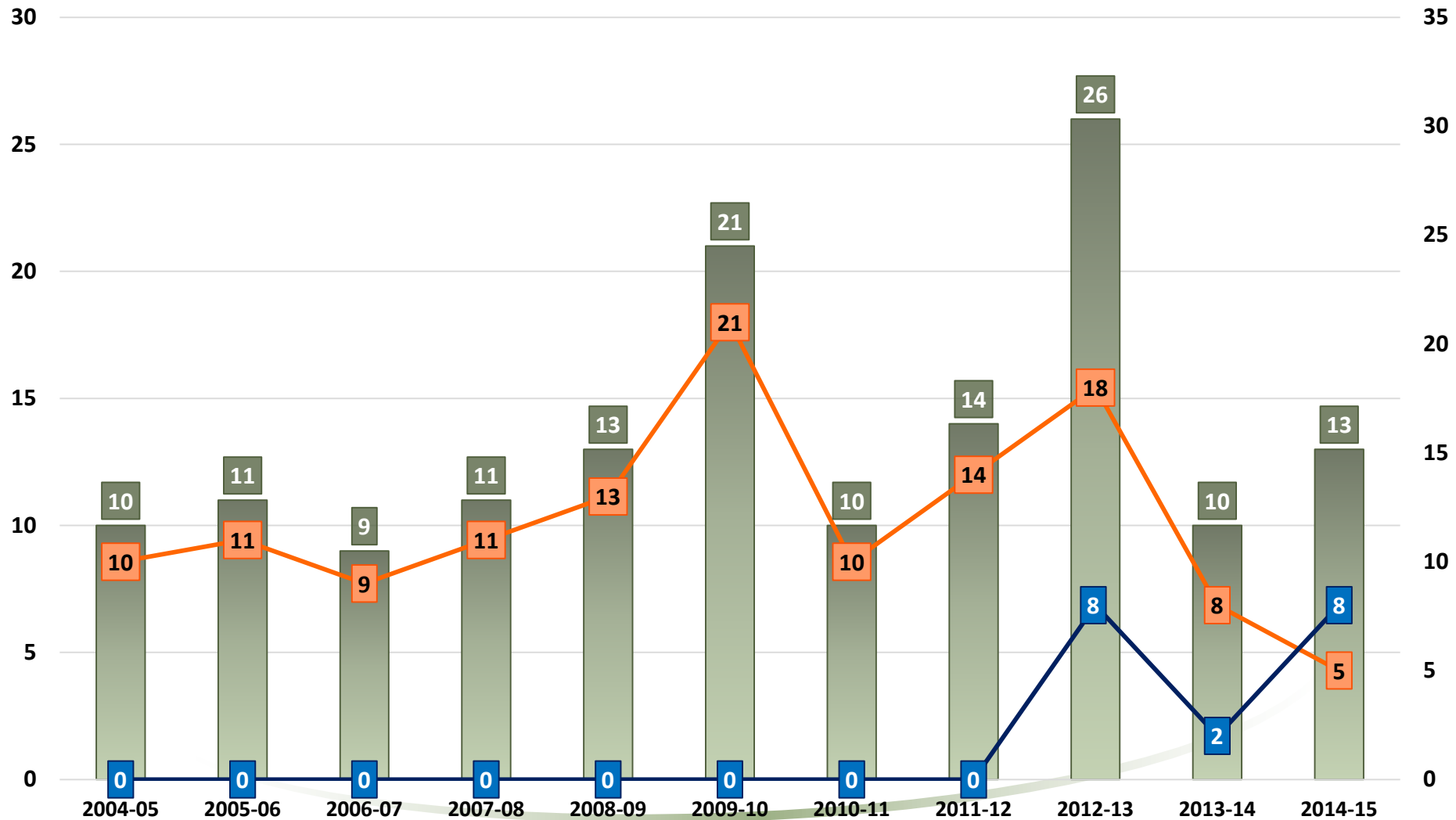


# College of Engineering Masters Degrees in Science and Engineering Graduates 2005-2015



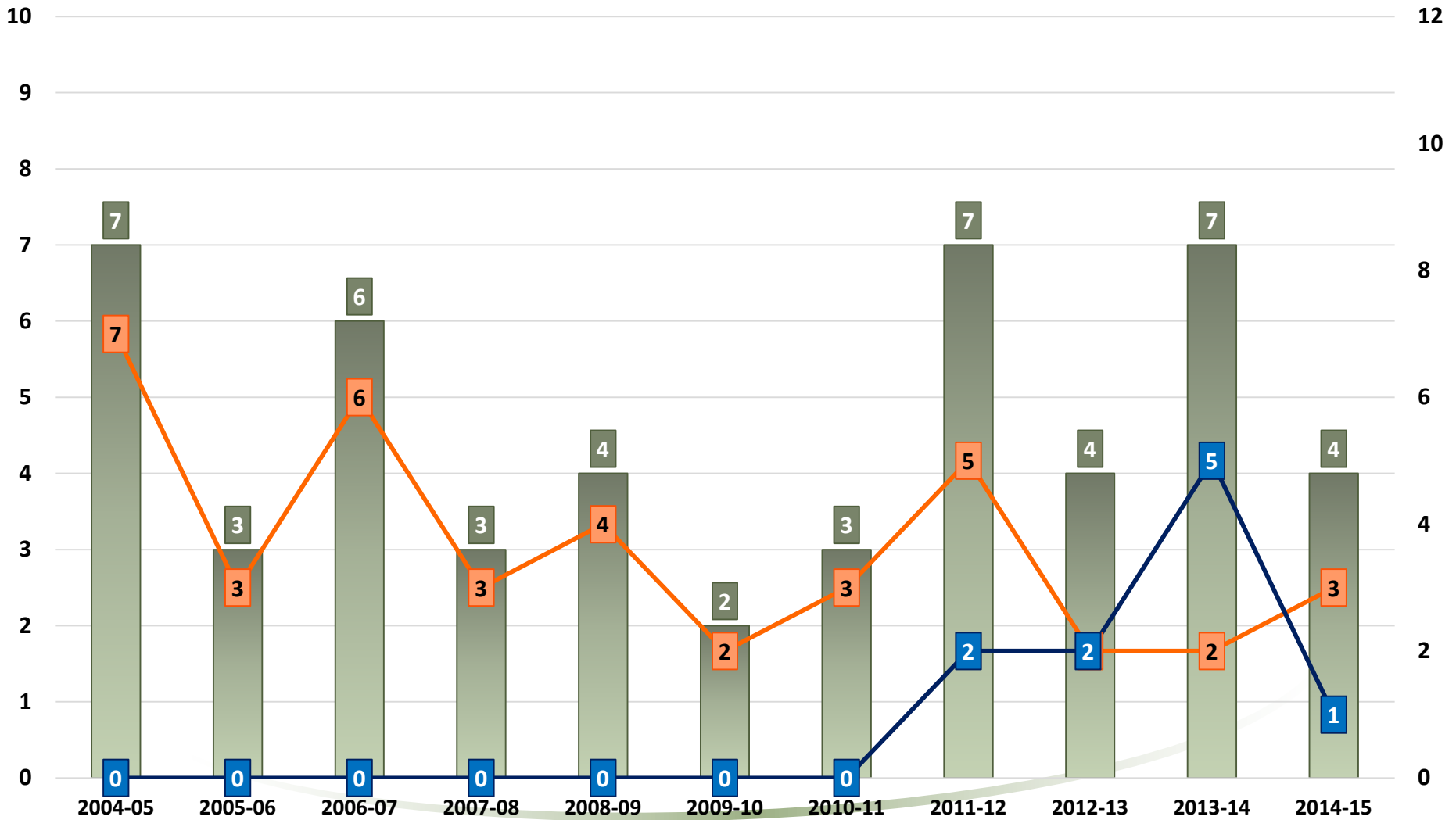
# College of Engineering Masters Degrees in Science and Engineering Graduates 2005-2015

■ Total    ● Mechanical Engineering - MS    ● Mechanical Engineering - ME



# College of Engineering Masters Degrees in Science and Engineering Graduates 2005-2015

■ Total    ● Industrial Engineering - MS    ● Industrial Engineering - ME





## College of Engineering Masters Degree Graduates 2005-2015

<b>PROGRAMA ACADÉMICO</b>	<b>2004-05</b>	<b>2005-06</b>	<b>2006-07</b>	<b>2007-08</b>	<b>2008-09</b>	<b>2009-10</b>	<b>2010-11</b>	<b>2011-12</b>	<b>2012-13</b>	<b>2013-14</b>	<b>2014-15</b>	<b>Total</b>
Industrial Engineering - MS	7	3	6	3	4	2	3	5	2	2	3	<b>40</b>
Industrial Engineering - ME	-	-	-	-	-	-	-	2	2	5	1	<b>10</b>
Mechanical Engineering - MS	10	11	9	11	13	21	10	14	18	8	5	<b>130</b>
Mechanical Engineering - ME	-	-	-	-	-	-	-	-	8	2	8	<b>18</b>
Chemical Engineering - MS	5	8	2	4	2	9	1	6	2	2	3	<b>44</b>
Chemical Engineering - ME	-	-	-	-	-	-	-	-	1	1	-	<b>2</b>
Civil Engineering - MS	24	21	21	14	27	35	20	13	14	15	15	<b>219</b>
Civil Engineering - ME	-	-	-	-	-	-	1	6	15	18	18	<b>58</b>
Computer Engineering - MS	10	12	16	11	9	10	4	5	5	1	3	<b>86</b>
Computer Engineering - ME	-	-	-	-	-	-	2	2	4	3	2	<b>13</b>
Electrical Engineering- MS	14	26	15	18	18	31	9	15	7	3	4	<b>160</b>
Electrical Engineering - ME	-	-	-	-	-	-	4	6	8	6	2	<b>26</b>
	<b>2005</b>	<b>2006</b>	<b>2007</b>	<b>2008</b>	<b>2009</b>	<b>2010</b>	<b>2011</b>	<b>2012</b>	<b>2013</b>	<b>2014</b>	<b>2015</b>	
<b>Total</b>	<b>70</b>	<b>81</b>	<b>69</b>	<b>61</b>	<b>73</b>	<b>108</b>	<b>54</b>	<b>74</b>	<b>86</b>	<b>66</b>	<b>64</b>	<b>806</b>

# College of Engineering PhD Graduates 2005-2015

